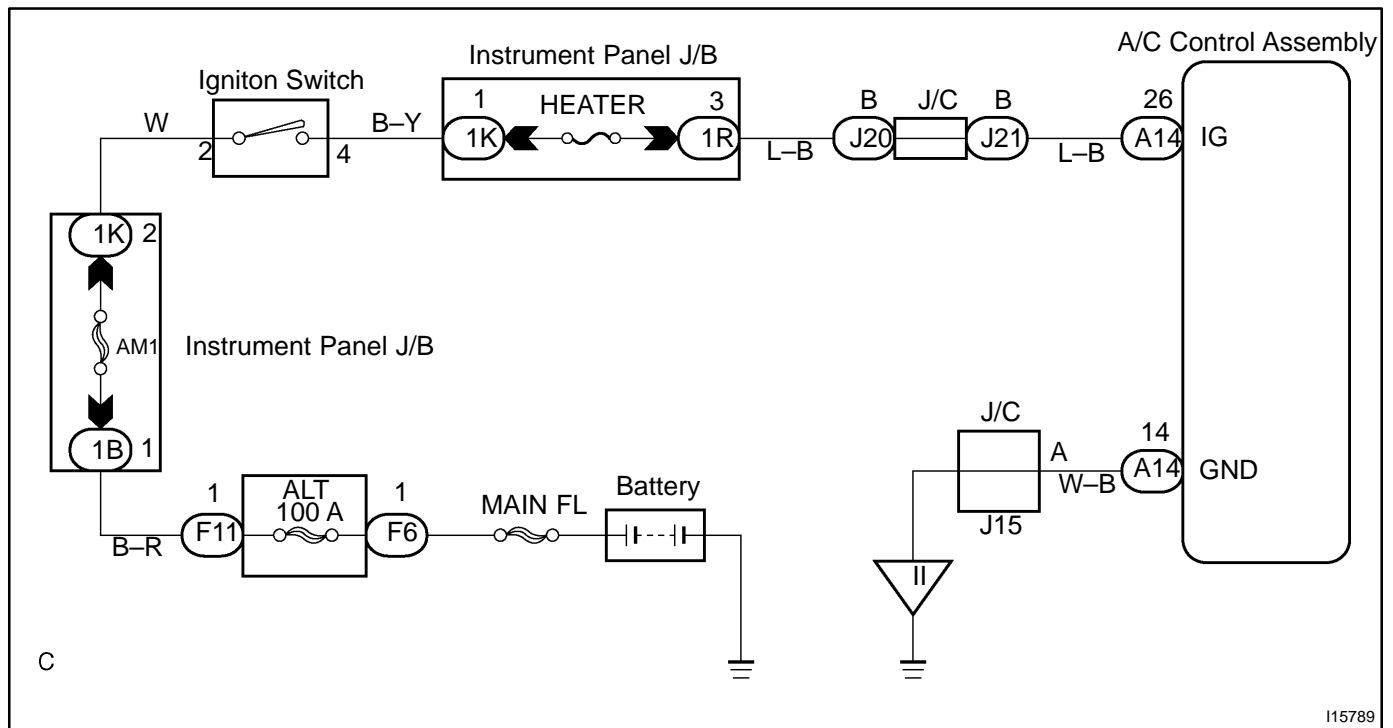


IG Power Source Circuit

CIRCUIT DESCRIPTION

This is the power source for the A/C control assembly (contains the ECU) and servomotors, etc.

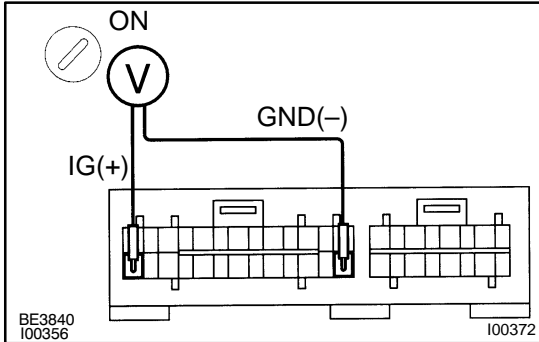
WIRING DIAGRAM



I15789

INSPECTION PROCEDURE

- | | |
|----------|--|
| 1 | Check voltage between terminals IG and GND of A/C control assembly connector. |
|----------|--|

**PREPARATION:**

- (a) Remove front ash receptacle (See page [BO-79](#)).
- (b) Remove A/C control assembly with connectors still connected (See page [BO-79](#)).
- (c) Turn ignition switch ON.

CHECK:

Measure voltage between terminals IG and GND of A/C control assembly.

OK:

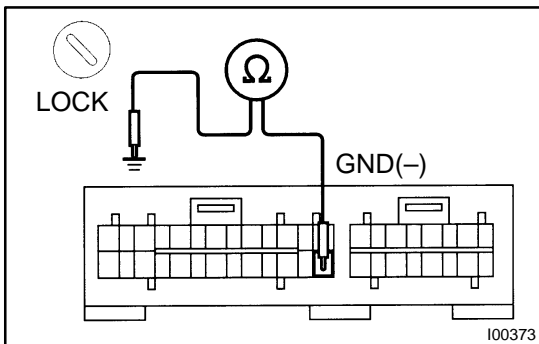
Voltage : 10 – 14 V

OK

Proceed to next circuit inspection shown on matrix chart (See page [DI-711](#)).

NG

- | | |
|----------|---|
| 2 | Check continuity between terminal GND of A/C control assembly and body ground. |
|----------|---|

**CHECK:**

Measure resistance between terminal GND of A/C control assembly and body ground.

OK:

Resistance : Below 1 Ω

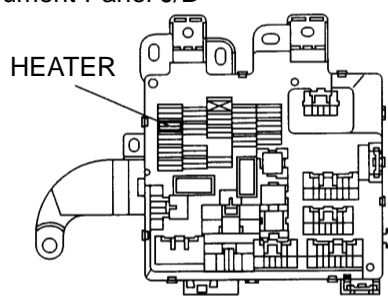
NG

Repair or replace harness or connector.

OK

3**Check HTR fuse.**

Instrument Panel J/B

**PREPARATION:**

Remove HEATER fuse in Instrument Panel J/B.

CHECK:

Check continuity of HEATER fuse.

OK:**Continuity exists.****NG****Check for short in all the harness and components connected to the HEATER fuse (See page [DI-746](#)).****OK****Check and repair harness and connector between A/C control assembly and battery.**